



(Approved by AICTE, New Delhi, Affiliated to Anna University Chennai
(Accredited by NBA, NAAC with 'A' Grade & Accredited by TCS, Chennai)

OVERALL FACULTIES SURVEY ANALYSIS

Faculties Feedback Analysis report - Academic year: 2024-25

Date: 14.05.25

TOTAL FACULTIES 221
TOTAL FACULTIES FEEDBACK SUBMITTED 203

Questions	Number of Faculties Marked-Poor	Number of Faculties Marked-Fair	Number of Faculties Marked- Good	Number of Faculties Marked-Very Good	Number of Faculties Marked - Excellent
Students are encouraged to undergo training after the working hours to achieve better results	0	0	7	25	171
Faculty members are given appropriate training with modern tools to manage the classes effectively.	0	1	8	19	175
Faculty can handle special classes through blended mode to take care of slow learners for better results	0	2	11	21	169
Space and infrastructure facility provided are sufficient and good for better teaching learning process.	0	0	16	17	170
The institution promotes faculty members towards their career development (FDP, Workshops, MOOC courses) and supports financially.	0	2	13	24	164
The curriculum has an appropriate blend of theory and practical component to meet the industry standards.	0	3	19	22	159
The evaluation and examination support system in existence for curriculum.	0	1	17	23	162

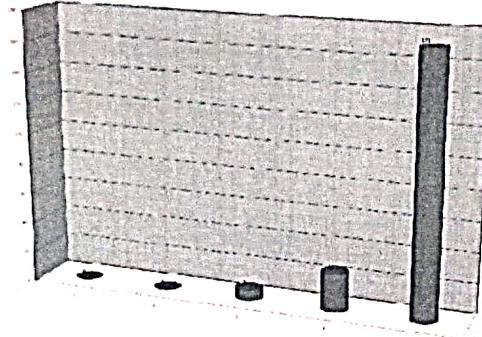



Dr. R. RAJAPPAN, Ph.D.
Principal
Mailam Engineering College
Mailam - 604 304, Villupuram (Dt.)

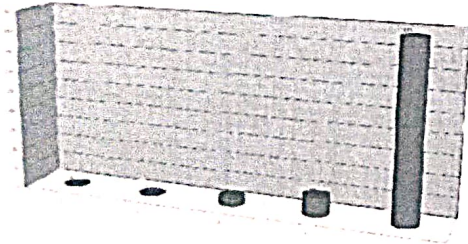
OVERALL FACULTIES SURVEY ANALYSIS

Faculties Feedback Analysis report - Academic year: 2024-25

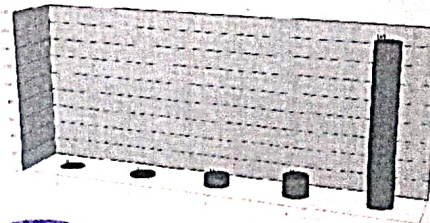
Students are encouraged to undergo training after the working hours to achieve better results

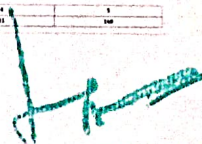


Faculty members are given appropriate training with modern tools to manage the classes effectively.



Faculty can handle special classes through blended mode to take care of slow learners for better results.




Dr. R. RAJAPPAN, Ph.D.
Principal
Mailam Engineering College
Mailam - 604 304, Villupuram (Dt.)



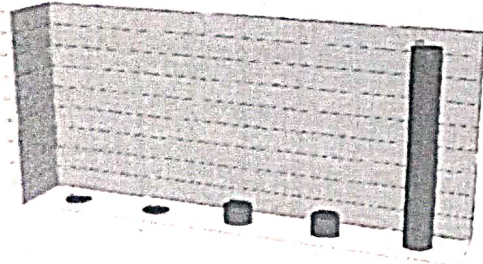
MAILAM Engineering College

(Approved by AICTE, New Delhi, Affiliated to Anna University Chennai
(Accredited by NBA, NAAC with 'A' Grade & Accredited by TCS, Chennai)

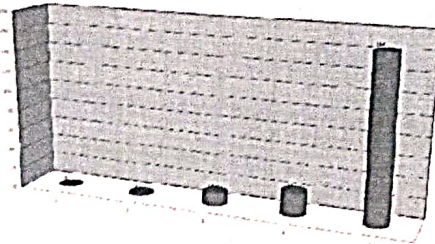
OVERALL FACULTIES SURVEY ANALYSIS

Faculties Feedback Analysis report - Academic year: 2024-25

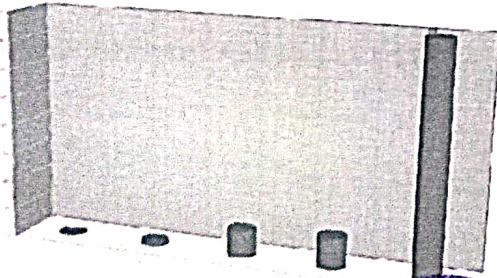
Space and infrastructure facility provides are sufficient and good for better teaching learning process.



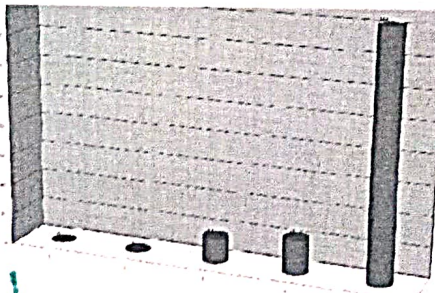
The institution promotes faculty members towards their career development (FDP, Workshops, MOOC courses) and supports financially



The curriculum has an appropriate blend of theory and practical component to meet the industry standards.



The evaluation and examination support system in existence for curriculum.



[Signature]
IQAC Coordinator



[Signature]
Dr. R. DAMODARAN, Ph.D.
Principal
Mailam Engineering College
Mailam - 604 304, Villupuram (Dt.)
[Signature]
Dr. R. DAMODARAN, Ph.D.
Principal
Mailam Engineering College
Mailam - 604 304, Villupuram (Dt.)