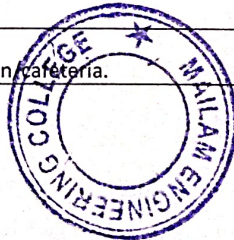


Date 23.04.25

TOTAL STUDENTS 3259  
 TOTAL STUDENTS FEEDBACK SUBMITTED 3153

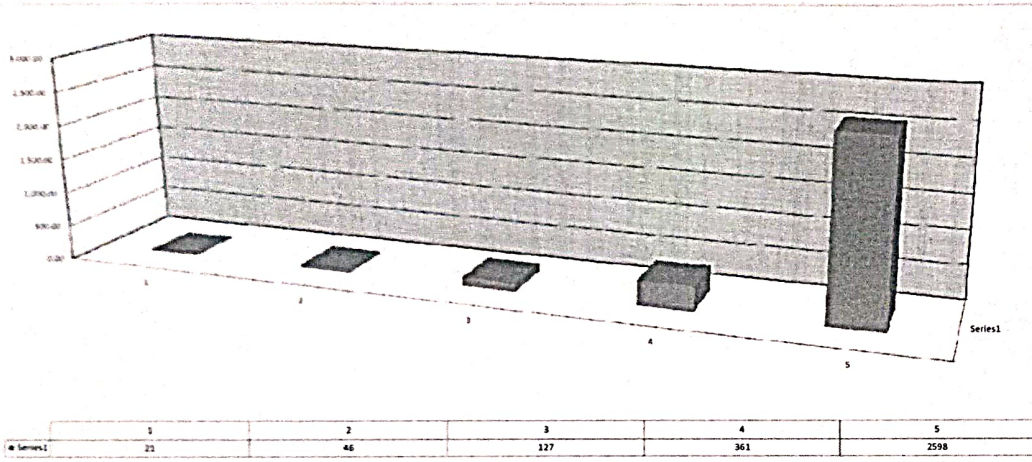
Questions	Number of students Marked-Poor	Number of students Marked-Fair	Number of students Marked-Good	Number of students Marked-Very Good	Number of students Marked-Excellent
The curriculum and syllabi are at par with the industry requirements.	21	46	127	361	2598
The institution provides special training for slow learners and motivates the fast learners to excel in their career.	11	44	131	357	2610
The institution motivates the students to learn beyond the curriculum through NPTEL,ALISON portal.	9	53	132	363	2596
The classrooms, laboratories, library are spacious, well maintained and fully equipped with appropriate resources.	13	21	144	361	2614
The faculty make use of ICT enabled tools like Google classroom, LMS, NPTEL lectures and LCD projectors for better teaching learning experience.	11	34	154	388	2566
The institution provides the students capability and skill enhancement programs at regular intervals.	17	47	141	359	2589
Common rooms for boys and girls are available with adequate facilities.	16	39	147	360	2591
Quality of the teaching by the faculty members and support extended by them towards the overall development of the students.	13	46	152	342	2600
The conduct of examinations and evaluation system (both internal and external exams) is effective and transparent.	7	47	157	297	2643
The quality of the food and hygiene maintenance in the hostel mess and canteen/cafeteria.	23	56	163	302	2609



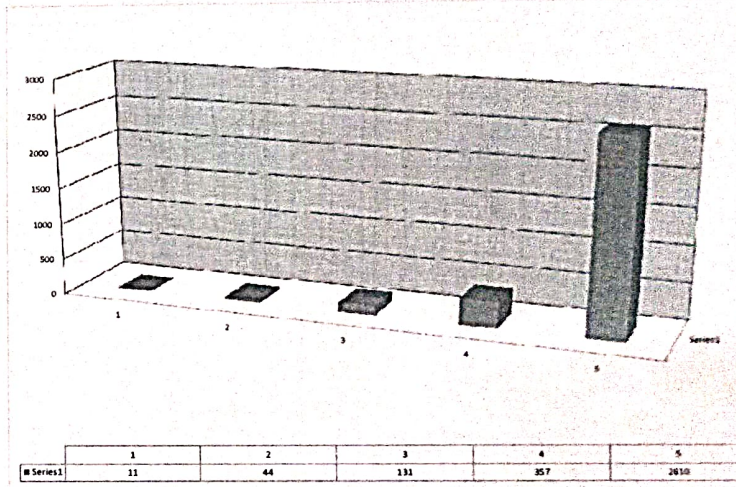
**Dr. R. RAJAPPAN, Ph.D.**  
 Principal  
 Mailam Engineering College  
 Mailam - 604 304, Villupuram (Dt.)

Students Feedback Analysis report - Academic year:2024-2025  
OVERALL STUDENTS SURVEY ANALYSIS

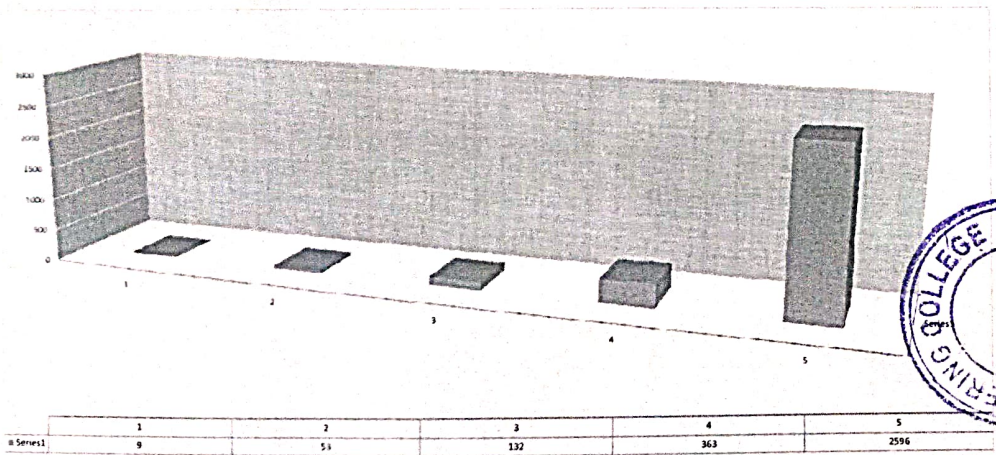
The curriculum and syllabi are at par with the industry requirements.



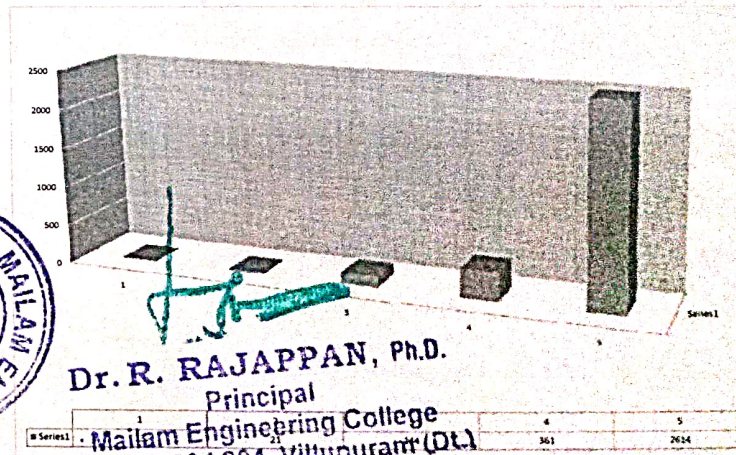
The institution provides special training for slow learners and motivates the fast learners to excel in their career.



The institution motivates the students to learn beyond the curriculum through NPTEL, SWAYAM portal.



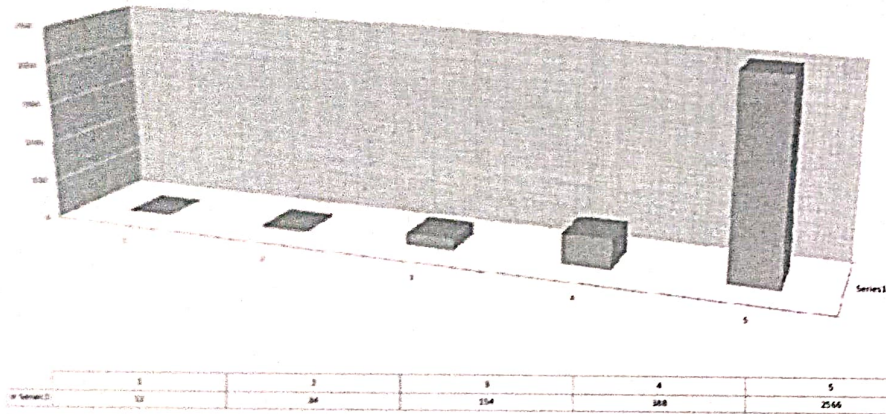
The classrooms, laboratories, library are spacious, well maintained and fully equipped with appropriate resources.



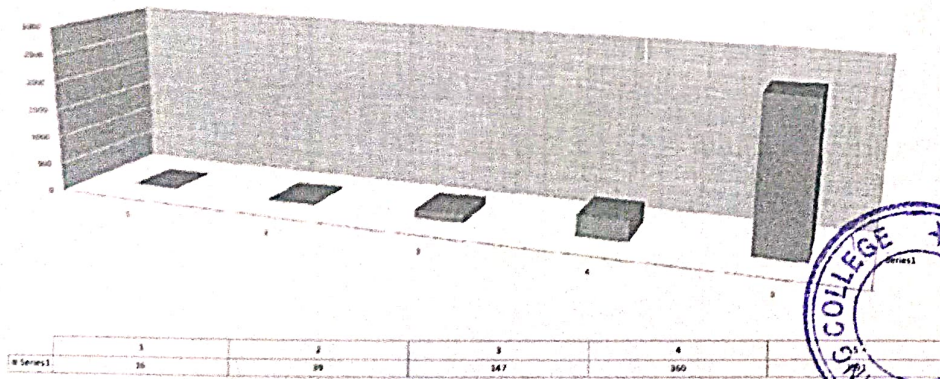
**Dr. R. RAJAPPAN, Ph.D.**  
Principal  
Mailam Engineering College  
Mailam - 604 304, Villupuram (Dt.)

Students Feedback Analysis report - Academic year:2024-2025  
OVERALL STUDENTS SURVEY ANALYSIS

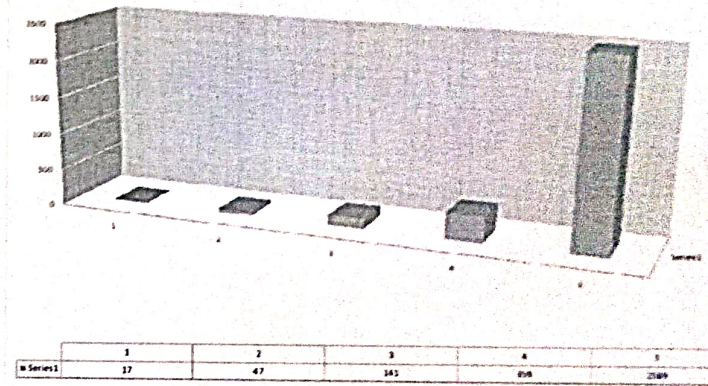
The faculty make use of ICT enabled tools like Google classroom, LMS, NPTEL lectures and LCD projectors for better teaching learning experience.



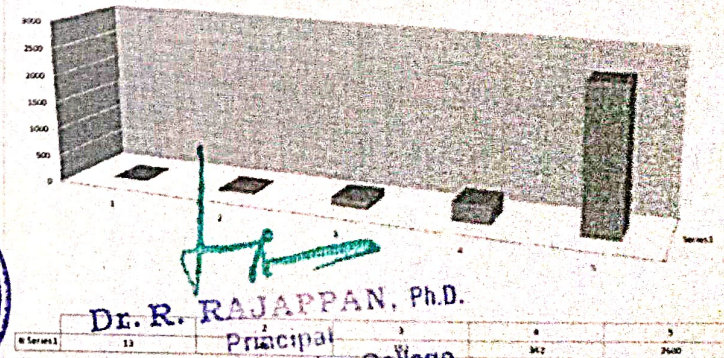
Common rooms for boys and girls are available with adequate facilities.



The institution provides the students capability and skill enhancement programs at regular intervals.



Quality of the teaching by the faculty members and support extended by them towards the overall development of the students.



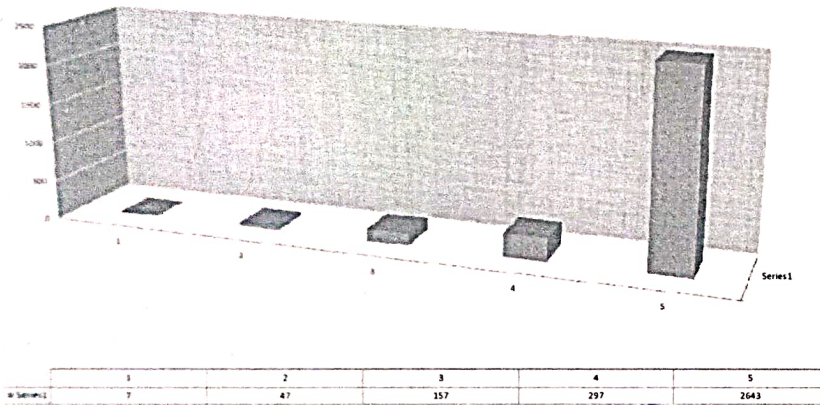
Dr. R. RAJAPPAN, Ph.D.

Principal

Mailam Engineering College  
Mailam - 604 304, Villupuram (Dt.)

Students Feedback Analysis report - Academic year:2024-2025  
OVERALL STUDENTS SURVEY ANALYSIS

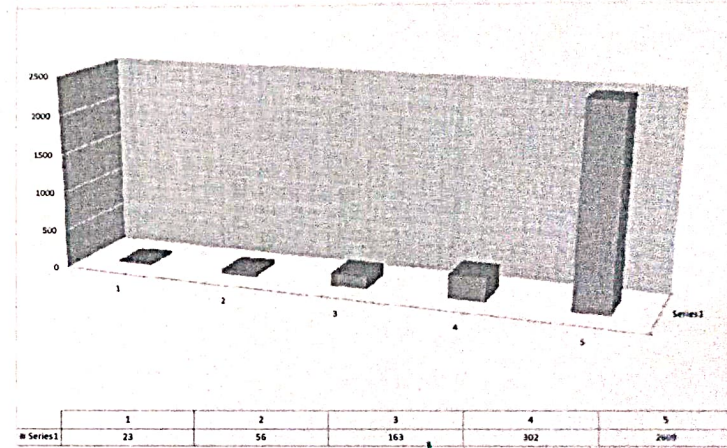
The conduct of examinations and evaluation system (both internal and external exams) is effective and transparent.



*M. Kumar*  
IQAC Coordinator



The quality of the food and hygiene maintenance in the hostel mess and canteen/cafeteria.



*Dr. R. Rajappan*  
Principal  
Mailam Engineering College  
Mailam - 604 304, Villupuram (Dt.)

*Dr. R. Rajappan*  
Principal